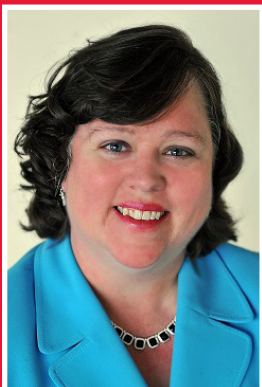


2016/2017 Annual Report



Communities
In Schools

Clark County



Julie Moorman
Executive Director

**A message
from our
Executive
Director**

Every good book, great movie and hit song, tells a story. And just like a good book, the story of Communities In Schools (CIS) of Clark County has characters who make up the story of our organization. The cast of our story includes our dedicated staff members working both in school and out of school to provide tutoring, enrichment and support for at-risk students. Each week our 321 Read volunteer mentors are part of the script that provides reading support to elementary students struggling with reading. Board members, who dedicate their time, talent, and treasures, are a part of our story. The Centerstone therapists, who CIS contracts with to provide in school therapy, are part of the supporting cast who help kids when they need it most. Community partners, businesses, donors and foundations contribute to our story with their resources and support. Parents and families of students we serve tell us how important and helpful our services have been to them, acknowledging the impact on their student's academic and personal success. But the best narrators of our story are the children we serve, who tell us in their own words that CIS has helped them read better, learn more and make new friends.

Throughout this annual report, you will get to learn more about our story. I hope you can envision your place in our story as we seek out new partners to help us serve more students here in Clark County.

– Julie Moorman
Executive Director

89% of students who received tutoring from a CIS of Clark County Resource Coordinator maintained or improved their report card grades over the course of the school year.

Over **1400** first grade students from all three Clark County School Systems received a free vision screening from volunteer optometrists provided by CIS of Clark County.

315 students received counseling from a licensed Centerstone therapist provided by CIS of Clark County.

425 students received academic assistance through CIS of Clark County Homework Clubs and In-School Tutoring.

105 students met individually each week with community volunteers to work on reading skills. The volunteers donated 1944 hours of service to the 321 Read Program and gave away nearly 2000 brand new books to those students.

638 students participated in CIS of Clark County's 21st Century Community Learning Center and Extended Day Learning before and afterschool programs.

2016/2017 By the Numbers

"I can't imagine not having the support of Communities in Schools at Clarksville Elementary School! The academic support is very much needed at our school. These are student needs that would be very difficult for our school to meet without the support from Communities in Schools. Educating and caring for students is a team effort, and I feel so blessed to have the support of Communities in Schools!"

Principal
— Clarksville Elementary



2016/2017 Board of Directors

Dr. Polly Hendricks, OD (Chairman)
Optometrist

Kye Hoehn (Vice-Chairman)
Owner "Kye's" and "Kye's II"

Dr. Marcia Segal (Secretary)
Indiana University Southeast (retired)

Garrett W. Smith (Treasurer)
Logan Lavelle Hunt Wealth Management

Dr. Mary Anne Baker
Cornell University (retired)

Kara Brown
The Center for Women and Families

Vicki Carmichael
Clark County Judge

Lynne Choate
Norton Healthcare

Walt Coppinger
Advisor Realty

Dr. Kim Hartlage
Greater Clark County Schools

Dr. Cathy Johnson
Indiana University Southeast

Chief Kenny Kavanaugh
Jeffersonville Police Department

Kevin Kirchgessner
Edward Jones Investments

Randy Koetter (Advisory)
Koetter Woodworking Company

Shari Lawler
Idemitsu Lubricants America Corp.

Clemen Perez-Lloyd
West Clark Community Schools

Chip Pfau
Geo. Pfau's Sons Company, Inc.

Dayleen Ragains
German American Bank

Greg Scales
First Savings Bank

Kevin Smith
Siemens Building Technologies

2016/2017 Income

Individual / Business Contributions:	\$31,877
Foundation / Trust Grants:	\$70,737
Metro United Way:	\$34,000
Federal, State, and School District Grants:	\$607,592
Fundraising Events:	\$56,838
Earned Revenue:	\$666,450
In-Kind Goods & Services:	\$23,373
Total Income:	\$1,490,867

2016/2017 Expenditures

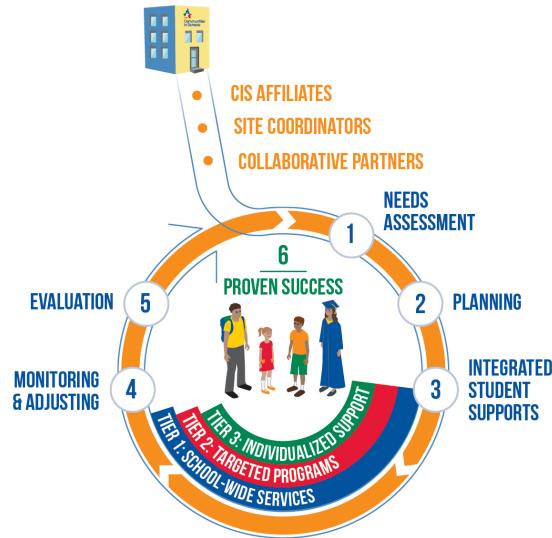
Programming & Grant Related Expenditures:	\$804,473
Fundraising Expenses:	\$41,018
Administrative Expenses:	\$216,752
Extended Day Learning Expenses:	\$387,073
Total Expenses:	\$1,449,316
Revenue Exceeding Expenses:	\$41,551.00
Ending Net Assets:	\$713,918

*these figures are unaudited to date and do not reflect audit adjusting entries

2016/2017 Financial Information*



OUR UNIQUE MODEL



© Communities In Schools 2016

• CIS AFFILIATES

Hire and train site coordinators, bring the CIS model to schools in need and mobilize partners to provide resources.

• SITE COORDINATORS

Trained professionals who work with school administrators to assess needs, develop a plan and build a team to provide supports to schools and students.

• COLLABORATIVE PARTNERS

Schools, businesses and community agencies all work together with site coordinator to deliver supports to students and families.

1 NEEDS ASSESSMENT

Analyze multiple sources of data to identify the key needs of the school and individual students.

2 PLANNING

Site coordinators lead their school support team to develop a plan to prioritize supports that address academic and non-academic needs.

3 INTEGRATED STUDENT SUPPORTS

Site coordinator and partners deliver tiers of support to the school, students and their families.



ACADEMIC ASSISTANCE



BASIC NEEDS



BEHAVIORAL INTERVENTIONS



COLLEGE & CAREER PREP



COMMUNITY & SERVICE LEARNING



ENRICHMENT



FAMILY ENGAGEMENT



LIFE SKILLS



MENTAL HEALTH



PHYSICAL HEALTH

4 MONITORING & ADJUSTING

Site coordinator continuously monitors student and school progress and adjusts supports to optimize results.

5 EVALUATION

Continuous assessment of partners and student supports by the CIS affiliate to demonstrate results and improve practice.

6 PROVEN SUCCESS

We increase graduation, reduce dropout, and improve attendance for schools in need.

2016/2017 Quotes/ Comments

*"I love everything
CIS has done for (my child) –
ensuring she doesn't get left behind.
Her grades went from
D's and F's to A's and B's."*

Parent
– Pleasant Ridge Elementary

*"CIS is making a difference with
our students daily, by providing additional
opportunities for the learning process to continue
before during and after school. As Chief of Police
and a veteran police officer, I am extremely proud
to serve as a board member for an organization
that is making such an investment in education and
in our community."*

Col. Kenny Kavanaugh
– City of Jeffersonville
Chief of Police

*"It helped me by
making me smarter."*

Student
– Parkwood Elementary

*CIS has made a tremendous impact
on the students at Parkview. Our students are able
to receive help with their homework and they stop me
in the hall to tell me about the engaging enrichment activities.
I think the addition of Dare to Care is also providing meals to
students who quite possibly would not have a meal that night if
it weren't for CIS and Dare to Care. There are just not enough
words to express how CIS is impacting our students.*

Counselor
– Parkview Middle School

*"Now I feel like
I am good at math."*

Student
– Silver Creek Elementary

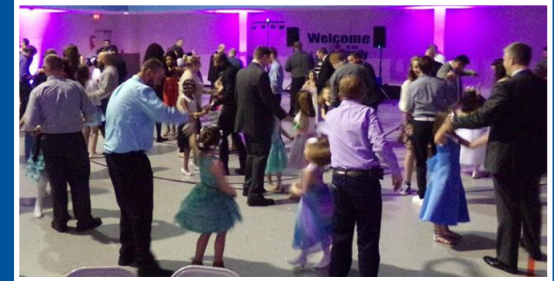
*"My students love their 321 Readers
and they all want one. They have also
gained SO much from having Resource
Coordinator work with them!
Please just keep it up!"*

Teacher
– Spring Hill Elementary

Highlights

READERS TO LEADERS BREAKFAST

In November 2016, we sponsored a new event, Readers to Leaders Breakfast, for our community. Board members and CIS supporters served as Table Captains and recruited guests to attend. We had over 180 people attend who were able to hear the story of Communities In Schools of Clark County and the impact we are making on supporting at-risk youth and their families throughout Clark County. The event included our amazing emcee Dawne Gee, from WAVE3-News, a creative video about our services and inspirational stories shared by a volunteer and parent. Thanks to our sponsors who supported this event through their generosity: Geo. Pfau's Sons, Fred Ray, Duke Energy, and KYE'S. This event raised over \$10,000 for our organization and increased our network of community supporters. Plus we awarded our Champions for Children Awards at the breakfast event and celebrated their contributions. Attendees received bookmarks created by our students to thank them for their attendance and support. It was an incredible event and so many people worked hard to make it all come together. Mark the date for our Second Annual Readers to Leaders Breakfast for Tuesday, November 14, 2017 at Kye's II at 8:00 am.



PRINCESS DANCE

In March 2017, CIS of Clark County held our first annual Princess Dance. The dance, designed to be a branding event for our organization, was a Royal hit! Over 225 attended, which included: grandparents, mothers, fathers, brothers, and other relatives accompanying their princesses. Parents expressed their gratitude for the efforts we took to be inclusive to all families. The Princess Dance became the perfect vehicle to get Clark County talking about Communities In Schools and the good things that we do for our children. The event consisted of loads of fun, snacks and refreshments, dance music and a photo booth (provided by DJ Jaybird). The photos captured the unforgettable night and gave each family a keepsake of the magical evening. Many participants expressed their desire to see this event happen annually.

SUPPLEMENTAL FUNDS

In late fall 2016, CIS of Clark County received word that our organization would be receiving additional funding from the Indiana Department of Education for our 21st Century Community Learning Center afterschool programs. The supplemental funds, totaling \$208,449.00, were to be used from January 1 – May 31, 2017. Thanks to the additional funding, we were able to provide tutors and academic coaches, as well as additional enrichment activities from Mad Science of Kentucky, the Louisville Science Center and the Louisville Zoo. With these funds we were also able to contract with two afterschool program managers who were able to help oversee afterschool programming and also with Diehl Consulting who provided an independent evaluation for CIS afterschool programs. The funds also allowed students from Parkview and River Valley to take field trips to the Kentucky Derby Museum and the Planetarium and provided professional development opportunities for our staff. CIS of Clark County is extremely grateful to the Indiana Department of Education – with the addition of these supplemental funds, our organization received approximately half a million dollars from them during the 2016-2017 school year!



ADDITION OF MARKETING COORDINATOR

During the 2016-2017 school year, CIS of Clark County hired Kaylee Gildersleeve as our first-ever marketing intern. Kaylee did such a fantastic job helping with CIS print materials, social media and newsletters, we were able to hire her as a part time marketing coordinator once her internship was completed. Kaylee recently graduated from Indiana University Southeast with a Bachelor's Degree in Advertising and currently works 20 hours per week at the CIS office. She has been instrumental in increasing our social media presence and in helping to get the word out about all of the great things CIS of Clark County is doing. Kaylee is an awesome addition to our Leadership Team and we look forward to seeing more of her impressive work in the future.

“Champion for Children” Awards

Each year Communities In Schools of Clark County recognizes outstanding members of the community who we see as “Champions for Children”. These awards are given in the categories of Educator, Volunteer, and Community Partner. The recipients are individuals or groups, who through their work or their actions, strive to improve the lives of children throughout Clark County. We are extremely proud to present this year’s award winners.....

**Volunteer:
Parker
Hannifin
(formerly
Clarcor)**



In 2015, Parker Hannifin’s HVAC Filtration Division (formerly CLARCOR Air Filtration Products) in Jeffersonville approached Spring Hill Elementary wanting to know how they could help the school. They were eager to volunteer in any way needed. A team of volunteers immediately became trained and began reading with students as part of CIS’s 321 Read program. Over the last three years, volunteers from Parker have also organized donations of school supplies, hand sanitizer, Kleenex, Lysol wipes, and a variety of other items. A team of volunteers worked in Spring Hill’s Peace Garden weeding and getting it spruced up. Parker also made a sizable monetary donation to the school to help cover the cost of student and family needs. Currently 9 people from Parker serve as volunteers for the 321 Read program. The volunteer team from Parker has made a huge impact on lives of countless children. They are a true blessing to Spring Hill School and to Communities in Schools.

Community Partner: Duke Energy



Duke Energy has been a long time partner of CIS of Clark County, having representation on our founding Board of Directors. They have continued their support by providing multiple \$1000 donations throughout the years. During the 2016-2017 school year, the Duke Energy Foundation awarded our organization a grant of \$21,730.00 for STEM (Science, Technology, Engineering and Math) programming afterschool. The grant was used to bring in Mad Science of Kentucky to provide enrichment activities at Parkwood, Northaven, Bridgepoint and Wilson. The grant also provided STEM resources for all CIS afterschool sites. Duke Energy was instrumental in the success of our first annual Readers to Leaders Breakfast in November of 2016 by becoming a Silver Sponsor of the event. When CIS teamed up with West Clark Community Schools to provide a summer reading program, the Duke Energy Foundation again stepped up with support, by granting the program \$16,500.00. Duke Energy continues to be a wonderful support to the community and to our organization!

Educator: Clemen Perez-Lloyd



In the fall of 2015 Clemen Perez-Lloyd joined the CIS of Clark County Board of Directors. As the Director of Federal, State and Local Grants for West Clark Community Schools, Clemen is dedicated to identifying specific academic needs of students and ensuring they reach their full potential. Her knowledge, experience and passion had an immediate positive impact on our organization. Clemen's presence on the board was key in strengthening the partnership between CIS and West Clark. Thanks to Clemen, CIS and West Clark have collaborated to offer extended summer learning programs. Most recently, Clemen secured and coordinated a grant from Duke Energy that provided additional summer remediation. She also facilitated a literacy training for CIS Resource Coordinators working in Borden, Henryville and Silver Creek Schools allowing these CIS staff members the benefit of the same training received by West Clark teachers. Clemen also served as a Table Captain for last year's Readers to Leaders Breakfast.

In addition to Communities In Schools, Clemen has also been active in a variety of other community organizations. She has served as a United Way Food and Shelter board member in Rocky Mount, NC. She also served on the board of Down East Partnership for Children in Rocky Mount, NC. Mrs. Perez-Lloyd was selected as Teacher of the Year at Northwest High School NC and was also honored as the North Carolina State Migrant Program Coordinator. In 2013, before her move to Indiana, she received the Quiet Storm Award from Nash Rocky Mount Schools. We are extremely grateful to have Clemen as part of the CIS of Clark County family!

CIS of Clark County Leadership Team

Staff Leadership Team

Executive Director – **Julie Moorman**

Director of Programming – **Michelle Allen**

Extended Day Learning Director – **Nicole Stone**

CFO & Grant Writer – **Pam Bischoff**

Information Specialist – **Amy Campbell**

Elementary Afterschool Program Manager – **Amanda McLendon**

Secondary Afterschool Program Manager – **Mariah Alexander**

Marketing Coordinator – **Kaylee Gildersleeve**

"It's always been said that 'It takes a village to raise a child.'; this is true now more than ever in public education. Without the professionalism, work ethic, and heart-felt devotion of Communities in Schools, West Clark Community Schools responsibility to educate all students would be even harder to accomplish."

Chad Schenck
– Superintendent,
West Clark Community School

"CIS has offered support both mentally and physically for my students. Services through CIS are some of their favorite times of the week."

Teacher
– Wilson Elementary



SITES AND SERVICES

School	District	CIS of Clark Services Provided
Borden	West Clark	Resource Coordinator / Therapist
Bridgepoint	Greater Clark	Resource Coordinator / Therapist / 21st CCLC / EDL (school age childcare grant)
Clarksville	Clarksville	Resource Coordinator / Therapist / 21st CCLC / EDL - aftercare only
Henryville	West Clark	Resource Coordinator / Therapist
Jonathan Jennings	Greater Clark	Resource Coordinator / Therapist / EDL
Maple	Greater Clark	Resource Coordinator / Therapist / EDL
New Washington	Greater Clark	EDL - aftercare only
Northaven	Greater Clark	Resource Coordinator / Therapist / 21st CCLC / EDL (school age childcare grant)
Parkwood	Greater Clark	Resource Coordinator / Therapist / 21st CCLC / EDL (school age childcare grant)
Pleasant Ridge	Greater Clark	Resource Coordinator / Therapist / EDL
Riverside	Greater Clark	Resource Coordinator / Therapist / 21st CCLC / EDL
Silver Creek Elem	West Clark	Resource Coordinator / Therapist
Silver Creek Primary	West Clark	Resource Coordinator / Therapist
Spring Hill	Greater Clark	Resource Coordinator / Therapist / 21st CCLC
Thomas Jefferson	Greater Clark	Resource Coordinator / Therapist / EDL
Utica	Greater Clark	EDL
Wilson	Greater Clark	Resource Coordinator / Therapist / 21st CCLC / EDL
Parkview Middle	Greater Clark	21st CCLC
River Valley Middle	Greater Clark	Resource Coordinator / Therapist / 21st CCLC
Jeffersonville High	Greater Clark	Resource Coordinator / Therapist / 21st CCLC

Donors





2016/2017 Donors and Community Partners

\$25,000+

Clarksville Community Schools
Communities In Schools
National
Greater Clark County Schools
Indiana Department of
Education
Indiana Family & Social
Services Administration
Metro United Way
New Hope Services

\$10,000+

Barbara Ann Maxwell
Community Foundation of
Southern Indiana
Duke Energy Foundation
Jeffersonville Housing Authority
West Clark Community Schools
WHAS Crusade for Children

\$5,000 +

Anonymous
Indiana Arts Commission
Kentuckiana Wood Products,
Inc.
Koetter Woodworking
Ronald McDonald House
Charities of Kentuckiana

\$2,500+

Clark County Youth Coalition
Dallk General Literacy
Foundation
Donna & David Reinhardt
Edward Jones Investments
Geo. Pfau's Sons Company
Kye Hoehn / Kye's I & Kye's II

\$1,000 +

Bennett & Bennett Insurance
First Savings Bank
Fred Ray
Hazel & Walter T. Bales
Foundation
Idemitsu Lubricants America
Jordan & Kevin Kirchgessner
Leslie Kiesel
Norman E. Pfau, III
Siemens Industry
Steel Dynamics Flat Roll Group
Your Community Bank

\$500 +

Al & Betty Kirchgessner /
Al's Farm Market
Carrie & Kevin Smith
Clark Memorial Hospital
Duke Energy
Dr. Gary Mestel
Dr. Kelly Dice
Dr. Larry Webb
Dr. Marcus Braaten
Dr. Polly Hendricks
Dr. Sara Pourheydarian
Dr. Troy Coker
French Lick Springs Resort
Globe Mechanical
Linda & Walter Coppinger
Madeleine Hope McKim
Cathy & Chuck Graninger
Sav-A-Step Food Marts
Smith Creek / Earth First
Taste of Jeffersonville

\$100 +

Advisor Realty
Amy & Vincent Garmon
Angela & Steve Nash
April Jacobs
Bill Burns
Budget Print Center
Carol Atmip
Carrie Hawkins
Cecile Blau
Cindy Kanning
Civilcon, Inc.
Colburn and Associates
Community Foundation of
Louisville
David Lloyd
Denise & Dan Ellnor
Don Allen
Dr. Kim Hartlage
Elizabeth Becht
Erin Bojorquez
Evan Williams Bourbon
Experience
German American Bancorp
Golds Jewelry
Greg Scales
Hon. Vicki Carmichael
Jeffersonville Breakfast
Optimist Club
Jennifer Hermans
Jennifer Korfhage
JoAnna Frascella
John McLaughlin
Judd Penske
Kara Brown
Karen Spencer
Kelly Nelson
Kelly Zullo
Kroger

L & D Mail Masters
Lauyans & Company, Inc.
Linda Smith
Lisa Newbanks
Lynn Vaught
Marcia & Ralph Scales
Marcia & Ed Segal
Marianna Dietrich
Martha Woelfel
Mary A. Rohleder
Mary Sue Ryan
Matt Neely
Melvin Rosenberger
Mike Bower
Nancy Jo Kraft
New Washington State Bank
Pam Bennett Martin
Perry Reisert
Rebecca Missi
Robert Steiner
Rodefer Moss & Co. PLLC
Ron Culler
Sam Sease
Samantha Hurst
Sammie Brian
Sandra Veltman
Sarah Hunter
Scott Carr
Shari Lawler
Sharon Rudd
Stacie Thompson
State Farm, Bryan Jackson
Sue Curd
Sweet Frog Premium Frozen
Yogurt
Sydney Whitlock
Thomas Brillhart
Wayne Dodge
WesBanco
Westminster Village

*CIS of Clark County
would like to extend
a special thank you
to all of our donors.
Whether you made
a contribution
through our golf
outing, Readers to
Leaders breakfast,
or trivia night,
made an in-kind
contribution or
donated your time,
talent or treasure
to our organization
in any way, your
generosity is very
much appreciated.*



Communities In Schools

Clark County

1406 Frederick Avenue
Jeffersonville, IN 47130

812 280-0028
www.CISofClark.org

Our Mission Statement

*The mission of
Communities
In Schools
is to surround
students with a
community of
support,
empowering
them to stay
in school and
achieve in life.*

PRSRT STD
US Postage
PAID
Louisville, KY
Permit #879