



Communities
In Schools

Clark County

2018/19 Annual Report

*Surrounding students with a
community of support,
empowering them to stay
in school and achieve in life.*



Tabitha Underwood
Executive Director

**A message
from our
Executive
Director**

Communities In Schools of Clark County experienced a change in its leadership at the end of 2018-2019. Julie Moorman stepped down as the Executive Director to pursue other interests. We appreciate everything she has done to guide the organization through its last few years of growth.

I am honored to be chosen as the new Executive Director and would like to thank the Board of Directors, staff, and community partners for allowing me the opportunity to serve such an incredible organization. I was drawn to this organization because of its mission to engage the community in the lives of our children. To address any social issue or build points of pride, it takes everyone coming together and having a vested interest in the results for any effort to be successful. This is what makes Communities In Schools unique. It takes the approach of not just providing academic support, but also enriching the lives of children through its services and helping them to build their social capital and networks of support. It is our responsibility as a community to bring all the resources we can to ensure every child can succeed.

This mission of community engagement is truly a passion of mine. Almost the entirety of my career has been focused on engaging people as agents of change within their neighborhoods and communities. This has spanned working with nonprofits, government, and higher education institutions through research and program development. There is nothing more rewarding than helping individuals and corporations find avenues for involvement that maximize their own strengths and abilities while also addressing community concerns. I look forward to utilizing this passion and experience to build upon the organization's history of success and growth.

I hope that you are inspired by the incredible work of Communities In Schools of Clark County and feel called to action. We welcome your engagement in our efforts to surround students with a community of support.

– Tabitha Underwood, Ph.D.
Executive Director

Communities In Schools of Clark County (CIS of Clark County) is a nonprofit organization serving students throughout Clark County, Indiana. Our mission is to surround students with a community of support, empowering them to stay in school and achieve in life.

Founded in 2002, we are one of 187 local affiliates of the national organization Communities In Schools, which is the largest, most effective dropout prevention organization in the United States.

The organization provides in-school supports and afterschool programming to 17 elementary, two middle, and one high school in Clark County, Indiana. Resource Coordinators are placed in the schools to provide tutoring, literacy mentoring, basic needs resources, and access to mental health services through a partnership with Centerstone. We also offer afterschool programming, which consists of homework help, academic support, and enrichment to approximately 600 students each year. Our model of services ensures that the whole community comes together to support the students of Clark County.

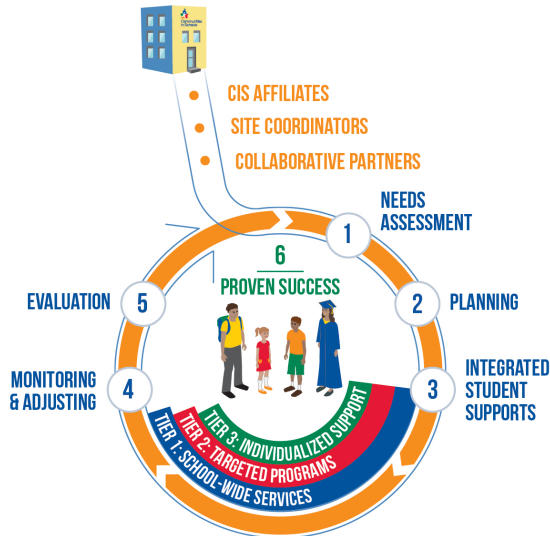
Our work is guided by the "Five Basics," a set of essentials that every child needs and deserves. These Five Basics include:

- **A one-on-one relationship with a caring adult**
- **A safe place to learn and grow**
- **A healthy start and a healthy future**
- **A marketable skill to use upon graduation**
- **A chance to give back to peers and the community**

It takes a whole community working together to support our children and ensure their success in life. When you engage with Communities In Schools (CIS) of Clark County, you become an influential partner, directly impacting the lives of students through the programs and services that help them stay in school and reach their greatest potential.



OUR UNIQUE MODEL



© Communities In Schools 2016

• CIS AFFILIATES

Hire and train site coordinators, bring the CIS model to schools in need and mobilize partners to provide resources.

• SITE COORDINATORS

Trained professionals who work with school administrators to assess needs, develop a plan and build a team to provide supports to schools and students.

• COLLABORATIVE PARTNERS

Schools, businesses and community agencies all work together with site coordinator to deliver supports to students and families.

1 NEEDS ASSESSMENT

Analyze multiple sources of data to identify the key needs of the school and individual students.

2 PLANNING

Site coordinators lead their school support team to develop a plan to prioritize supports that address academic and non-academic needs.

3 INTEGRATED STUDENT SUPPORTS

Site coordinator and partners deliver tiers of support to the school, students and their families.



ACADEMIC ASSISTANCE



BASIC NEEDS



BEHAVIORAL INTERVENTIONS



COLLEGE & CAREER PREP



COMMUNITY & SERVICE LEARNING



ENRICHMENT



FAMILY ENGAGEMENT



LIFE SKILLS



MENTAL HEALTH



PHYSICAL HEALTH

4 MONITORING & ADJUSTING

Site coordinator continuously monitors student and school progress and adjusts supports to optimize results.

5 EVALUATION

Continuous assessment of partners and student supports by the CIS affiliate to demonstrate results and improve practice.

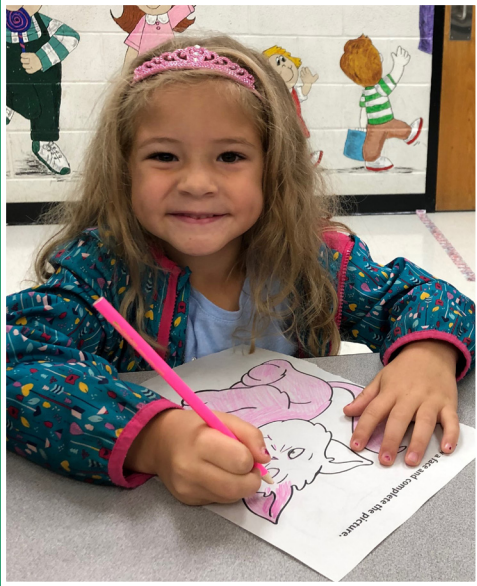
6 PROVEN SUCCESS

We increase graduation, reduce dropout, and improve attendance for schools in need.

SITES AND SERVICES

School	District	CIS of Clark Services Provided
Borden	West Clark	Resource Coordinator / Therapist
Bridgepoint	Greater Clark	Resource Coordinator / Therapist / 21st CCLC / EDL
Clarksville	Clarksville	Resource Coordinator / Therapist / 21st CCLC / EDL
Henryville	West Clark	Resource Coordinator / Therapist
Jonathan Jennings	Greater Clark	Resource Coordinator / Therapist / EDL
Maple	Greater Clark	Resource Coordinator / Therapist / EDL
New Washington	Greater Clark	EDL - aftercare only
Northaven	Greater Clark	Resource Coordinator / Therapist / 21st CCLC / EDL
Parkwood	Greater Clark	Resource Coordinator / Therapist / 21st CCLC / EDL
Pleasant Ridge	Greater Clark	Resource Coordinator / Therapist / EDL
Riverside	Greater Clark	Resource Coordinator / Therapist / EDL
Silver Creek Elem	West Clark	Resource Coordinator / Therapist
Silver Creek Primary	West Clark	Resource Coordinator / Therapist
Spring Hill	Greater Clark	Resource Coordinator / Therapist
Thomas Jefferson	Greater Clark	Resource Coordinator / Therapist / EDL
Utica	Greater Clark	EDL
Wilson	Greater Clark	Resource Coordinator / Therapist / 21st CCLC / EDL
Parkview Middle	Greater Clark	21st CCLC
River Valley Middle	Greater Clark	21st CCLC
Jeffersonville High	Greater Clark	Resource Coordinator / Therapist / 21st CCLC

**Serving
20 schools
across
3 school districts**



Tier I

3302

ILEARN Snacks to 3rd, 4th, and 5th graders during testing.

6842

Students attended in-school theater performances.

1179

Vision screenings for 1st graders.

1410

Dictionaries given to all 3rd graders in Clark County.

175

Coats given to students in need.

Tier II & Tier III

Tutoring

401

Students received in-school tutoring by resources coordinators.

90%

Maintained/improved report card grades.

School Based Therapy

425

Students served.

321 Read

117	1st, 2nd, and 3rd graders served.
101	Volunteers served a total of 2298 hours.
2298	New books given away.
\$65,929.62	Value of program.
86%	Maintained/improved reading report card grades.

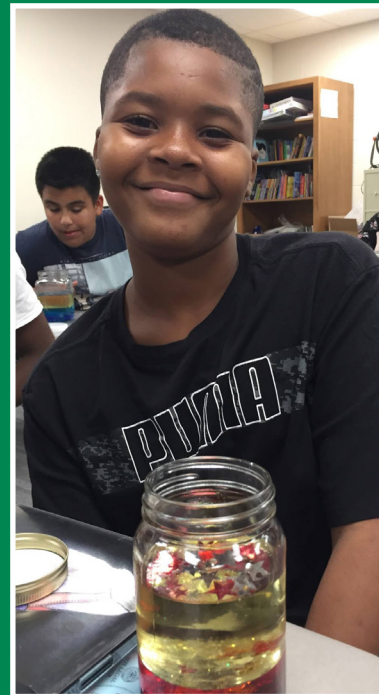
21st Century Community Learning Centers

269	Students participated.
86%	Of regularly attending participants improved their academic performance over the course of the school year as reported by teachers.

Extended Day Learning

323	Students served.
-----	------------------

2018/2019 Impact



Highlights

The **321 Read Program** continued to flourish during the 2018-2019 school year. Training from Instructional Coaches provided volunteers with additional resources and strategies as they read with students each week. We are extremely proud to report that 86% of students participating in the 321 Read program maintained or improved their reading report card grades over the course of the school year. That is a 14 point jump from the 2017-2018 school year!

In January 2019, CIS of Clark County added **Grant Writer, Sandy Bowling**, to our Leadership Team. Sandy has extensive grant writing, fund development and nonprofit leadership experience.

We created the **Community Champion** program to create a longer term funding source. Individuals pledge \$500 a year for 5 years and corporations pledge \$2000 a year for 5 years. In 2018-2019, nine individuals and one corporation became our first cohort of Community Champions.

Our annual fundraisers were successful in raising over **\$34,000** for the organization. Moving forward, efforts will be centered on Readers to Leaders Breakfast and Trivia Night in order to maximize staff and board time. The golf scramble will not be held in 2019-2020.

Our programs have remained strong and funding has been sustained, which enables CIS of Clark County to reach a multitude of children and families across Clark County.



2018/2019 Income

Individual/Business Contributions:	\$37,881.17
Business/Foundation Grants:	\$88,875.00
Metro United Way:	\$100,499.15
Federal, State, and School District Grants:	\$624,133.78
Fundraising Events:	\$45,938.43
Earned Revenue:	\$674,522.00
In-Kind Goods & Services:	\$990.00
Miscellaneous:	\$11,856.26
Total Income:	\$1,584,695.79

2018/2019 Expenditures

Programing & Grant Related Expenditures:	\$748,892.16
Fundraising Expenses:	\$33,940.21
Administrative Expenses:	\$333,432.51
Extended Day Learning Expenses:	\$358,991.69
Total Expenses:	\$1,475,256.58
Revenue Exceeding Expenses:	\$109,439.21
Ending Net Assets:	\$862,771.78

*these figures are unaudited to date and do not reflect audit adjusting entries

2018/2019
Financial
Information



“Champion for Children” Awards

Each year Communities In Schools of Clark County recognizes outstanding members of the community who we see as “Champions for Children”. These awards are given in the categories of Educator, Volunteer, and Community Partner. The recipients are individuals or groups, who, through their work or their actions, strive to improve the lives of children throughout Clark County. We are extremely proud to present this year’s award winners...

**Volunteer:
Josh Kornberg**



Josh Kornberg, the Executive Director of Development for Ivy Tech Community College, joined the CIS of Clark County Board of Directors in 2017 and immediately began making a huge impact. He has helped develop our fundraising strategy by taking an active role on the Finance, Fund Development and Executive Committees. He also currently serves as the board’s Vice President. When the organization began the search for a new Executive Director in the spring of 2019, Josh not only led the search committee, but also volunteered to act as an interim point of contact for the organization until a new Director was hired. In addition to his involvement with CIS, Josh also lends his expertise and passion to several other community organizations such as the Jeffersonville Parks Authority, Jeffersonville Library Foundation Board, IU Alumni Association Board of Managers, and Big Brothers Big Sisters Advisory Board. He recently received his Doctorate in Education from Spalding University.

Community Partner:
Dare to Care



In 2013, Dare to Care opened a Community Kitchen to serve the Louisville area. Last year, the Community Kitchen prepared 239,990 hot, nutritious meals for children. Communities In Schools began our partnership with Dare to Care in the fall of 2015 by hosting Kids Cafés at various afterschool sites. Thanks to this collaboration, students at Parkwood, Northaven, River Valley, Parkview, and Jeff High receive a hot meal every day as part of the CIS after school program. The issue of food insecurity is an ever-growing need for many families and CIS is incredibly grateful to Dare to Care for providing such a great service for our kids. Students, parents, and administrators have all expressed excitement and appreciation for this program. Laura Morris, Principal at Northaven Elementary said, "I love how Dare to Care helps us take care of our kids in every way. Dare to Care and CIS help us address our students' needs so they can succeed. Harvard here we come!"

Educator:
Tara Spiehs



In her role as a counselor at Parkview Middle School, Tara Spiehs acts as a Champion for Children every day. Tara has worked at Parkview for five years and was an ESL teacher for eleven years before that. In addition to her many other duties at the school, Tara also acts as an Afterschool Liaison for Communities In Schools. She has been instrumental in helping to recruit students and in communicating with teachers and parents. She has led professional development trainings for CIS staff and done everything from helping with family night events to providing hands on help during programming. Tara has contributed a tremendous amount to the success of CIS programming at Parkview. She is a true asset to our program and to the school.

Funders



Event Title Sponsor

Ivy Tech Community College
Koetter Woodworking

Grantors

CIS Indiana
Metro United Way
Family & Social Services
Administration
Hazel and Walter Bales
Foundation
Indiana Department
of Education
Indiana Housing and
Community Development
Authority
Indiana Arts Council
New Hope Services/Region 18
WHAS Crusade for Children

*Grantors => \$5000

Partnerships

Clarksville Community Schools
Greater Clark
Community Schools
West Clark Community Schools



Communities
In Schools

is a Metro United Way agency and
21st Century Community Learning Center provider.



\$25,000+

Clarksville Community School Corporation
 Indiana Family and Social Services Administration (FSSA)
 CIS Indiana
 Greater Clark County Schools
 Indiana Department of Education (IDOE)

\$10,000+

West Clark Community Schools
 New Hope Services, Inc.

\$5,000+

Koetter Woodworking Company
 Indiana Arts Commission
 Hazel & Walter T. Bales Foundation
 City of Jeffersonville
 Barbara Ann Maxwell
 WHAS Crusade for Children
 Kentuckiana Wood Products, Inc.

\$2,500+

Wood-Carr Community Fund
 Vectren Foundation
 Argi
 David Reinhardt
 Community Foundation of Southern Indiana
 Dollar General Literacy Foundation

\$1,500+

Samtec, Inc.
 Siemens Industry Inc.
 Kosair Charities
 Polly E. Hendricks
 German American Bancorp
 Clark County Youth Coalition
 Idemitsu Lubricants America
 Donn R. Chatham
 Geo. Pfau's Sons Company, Inc.
 Norman E. Pfau III
 Ivy Tech Community College

\$1,000+

Steel Dynamics Flat Roll Group
 Floyd Memorial Foundation Inc.
 Eric Howard
 Rotary Club of Jeffersonville
 Mary C. Graninger
 WesBanco

\$500+

Kevin Smith
 Madeleine Hope McKim
 Sam and Sonia Gardner
 Jane Brubeck
 Jim and Cindy Kanning
 MWM Advisory Services LLC
 LDS Photography
 TaxSpeaker
 KP Underwriting LLC
 News and Tribune
 Dawn Decker and Randall Standard
 Walmart
 Dayleen A. Ragains
 Advisor Realty
 Denise Ellnor
 Greg and Lori Scales
 Marcia T. Segal
 Globe Mechanical

RE/MAX First - Bill Burns
 Advanced Electrical Systems
 Neovia Logistics
 Kye Hoehn
 Logan Lavelle Hunt Insurance Agency
 Joshua Kornberg
 First Savings Bank
 Jeffersonville F.O.P. Lodge #100
 Graceland Baptist Church
 Duke Energy
 Vicki Carmichael

Community Champions
Pledge \$500 annually for 5 years

News and Tribune
 Sam and Sonia Gardner
 Polly E. Hendricks
 Josh Kornberg
 Jim and Cindy Kanning
 Norman E. Pfau III
 Dayleen A. Ragains
 Greg and Lori Scales
 Marcia T. Segal
 Kevin and Carrie Smith

2018/2019 Donors

CIS of Clark County would like to extend a special thank you to all of our donors. Whether you made a contribution through our golf outing, Readers to Leaders breakfast, or trivia night, made an in-kind contribution or donated your time, talent or treasure to our organization in any way, your generosity is very much appreciated.



Communities
In Schools

Clark County

Staff Leadership Team

Executive Director – **Julie Moorman** (through April 2019)

Current Executive Director – **Dr. Tabitha Underwood**

Director of Programming – **Michelle Allen**

Financial Manager – **Trina Oltman**

Extended Day Learning Director – **Nicole Stone**

Information Specialist – **Amy Campbell**

Elementary Afterschool Program Manager – **Amanda McLendon**

Secondary Afterschool Program Manager – **Mariah Mayfield**

Marketing Coordinator – **Kaylee Gildersleeve**

Grant Writer – **Sandy Bowling**

2018-19 Board of Directors

Dr. Polly Hendricks, OD (Chair)
Optometrist

Kye Hoehn (Vice-Chair)
Owner “Kye’s” and “Kye’s II”

Dr. Marcia Segal (Secretary)
Indiana University Southeast (retired)

Garrett W. Smith (Treasurer)
Logan Lavelle Hunt Wealth Management

Greg Alexander
Vectren Energy

Kara Brown
Center for Lay Ministries

Vicki Carmichael
Clark County Judge

Walt Coppinger
Advisor Realty

Dr. Kim Hartlage
Greater Clark County Schools

Dr. Cathy Johnson
Indiana University Southeast

Chief Kenny Kavanaugh
Jeffersonville Police Department

Randy Koetter (Advisory)
Koetter Woodworking Company

Josh Kornberg
Ivy Tech Foundation

Sandy Myers
West Clark Schools

Chip Pfau
Geo. Pfau’s Sons Company, Inc.

Dayleen Ragains
German American Bank

Greg Scales
First Savings Bank

Kevin Smith
Siemens Building Technologies

Amy Wheatley (Advisory)
The Law Office of Nick Stein

Call to Action!

Give Today

General donations:

Make a secure online donation at www.cisofclark.org or mail a check to 4403 Hamburg Pike, Suite C Jeffersonville, IN 47130.

Community Champions:

Community Champions are socially responsible individuals or corporations committed to addressing students' unmet needs. Corporations contribute **\$2000 each year for 5 years**, and individuals contribute **\$500 each year for 5 years**.

Sponsorships:

Serve as a sponsor for specific events during the year which support the programs and services of CIS of Clark County.

Donate through partners:

CIS participates in the Kroger Rewards and Amazon Smile programs. You can link your Kroger Rewards Card and Amazon Smile account to CIS of Clark County.

Volunteer

We need volunteers in a variety of capacities including 321 Read mentors, leading enrichment activities for afterschool programming, tutoring, and serving on our Board of Directors and committees.

Be an Ambassador

Are you passionate about the mission of CIS of Clark County? Do you want to make an impact in the life of a child in Clark County? CIS of Clark County needs you to help us spread the word about our programs and services and how individuals and corporations can engage with us. We need ambassadors who can share our mission with their network of friends and colleagues.

Stay in Touch

Stay informed and engaged by signing up for our monthly e-newsletter or following us on social media.



Facebook.com/cisofclark



Twitter.com/cisofclark



Instagram.com/cisofclark



Cisofclark.org

**To learn more, contact us at
812-280-0028 or
cis@cisclark.org**



Communities In Schools

Clark County

4403 Hamburg Pike, Suite C
Jeffersonville, IN 47130

812 280-0028
www.CISofClark.org

Our Mission Statement

*The mission of
Communities
In Schools
is to surround
students with a
community of
support,
empowering
them to stay
in school and
achieve in life.*